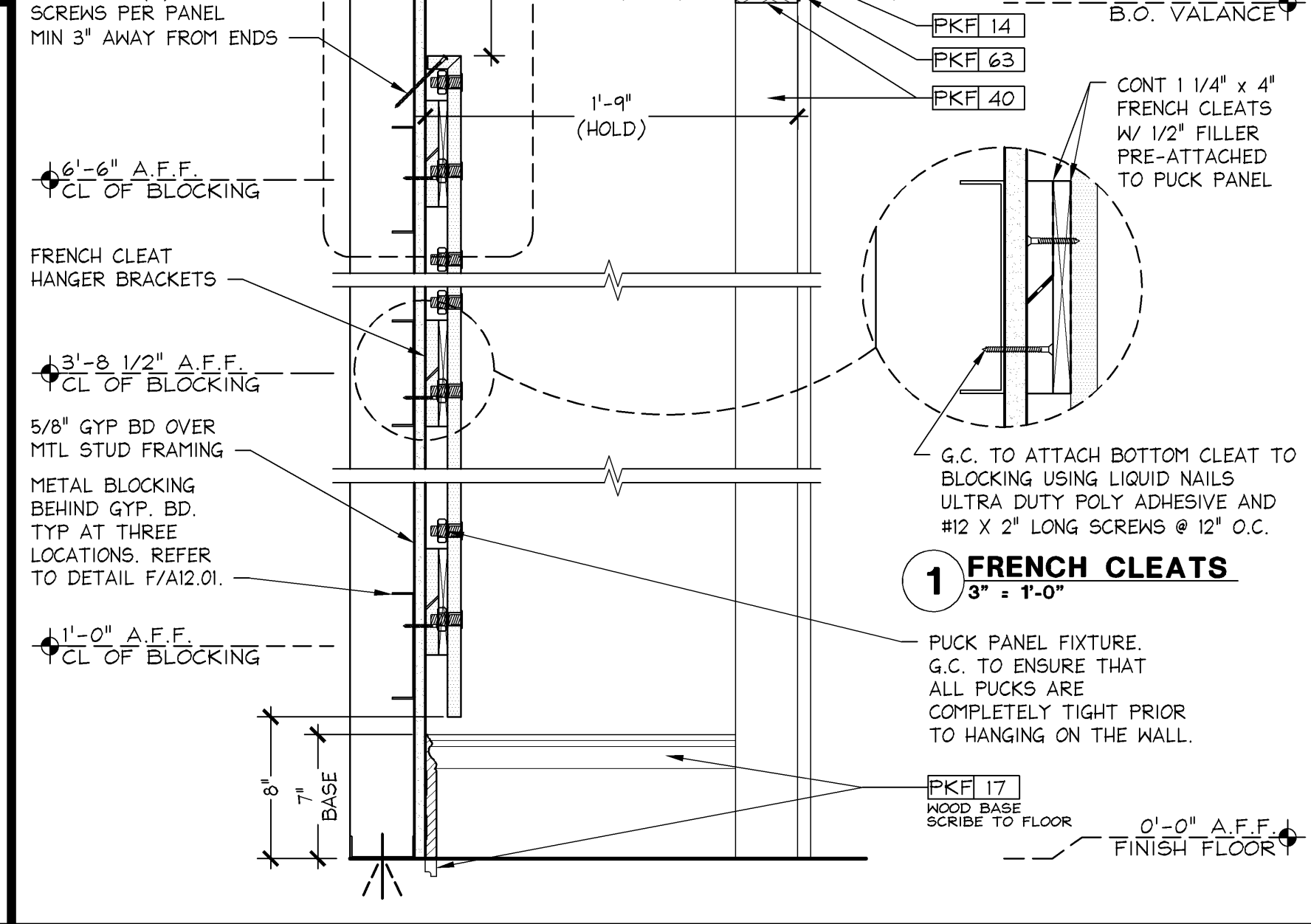
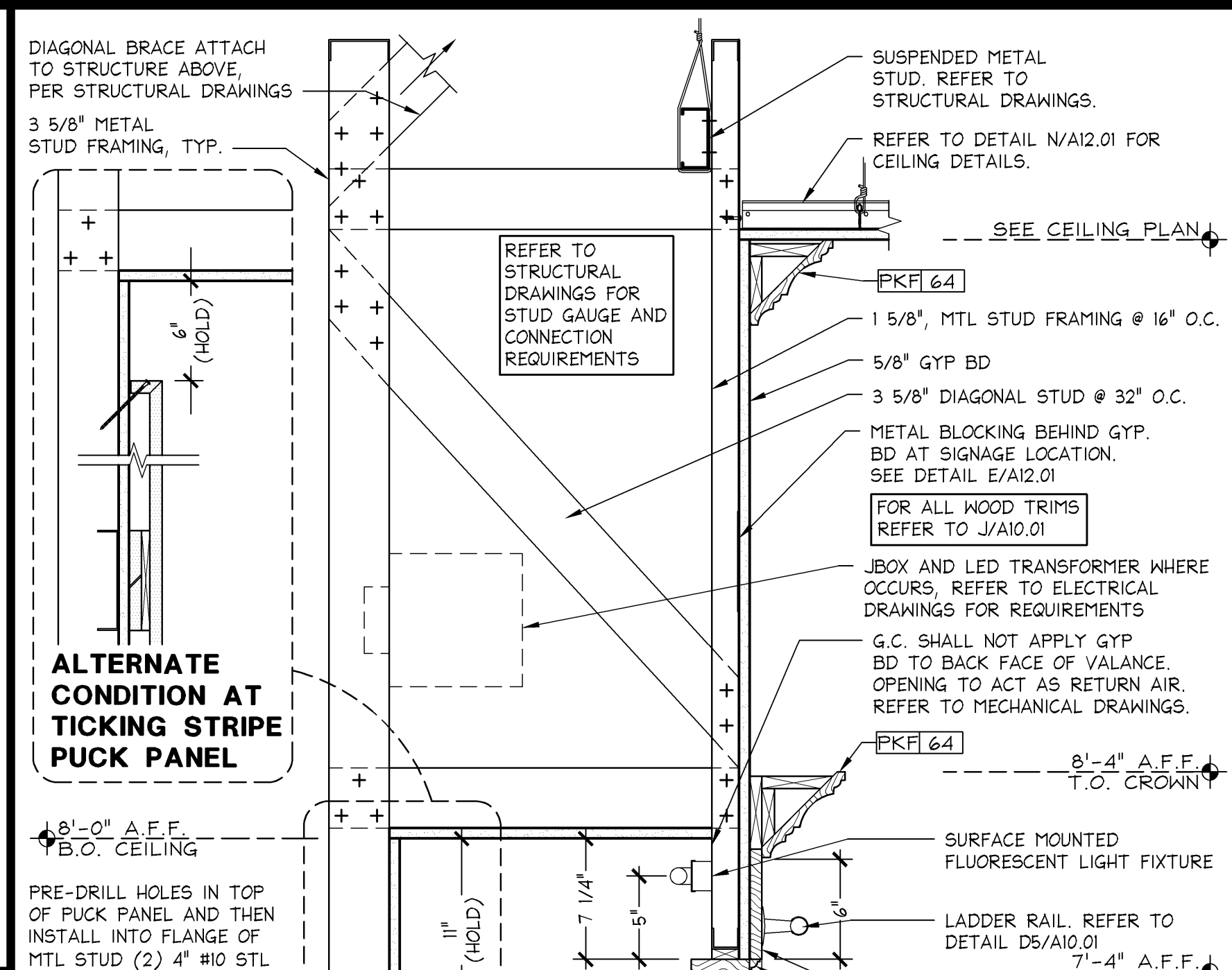


**PINK CABINET TYPE A  
PARTIAL TO FULL HEIGHT WALL DETAIL**

3" ± 1'-0"

05D-A1002-L00-DET1

10.28.13

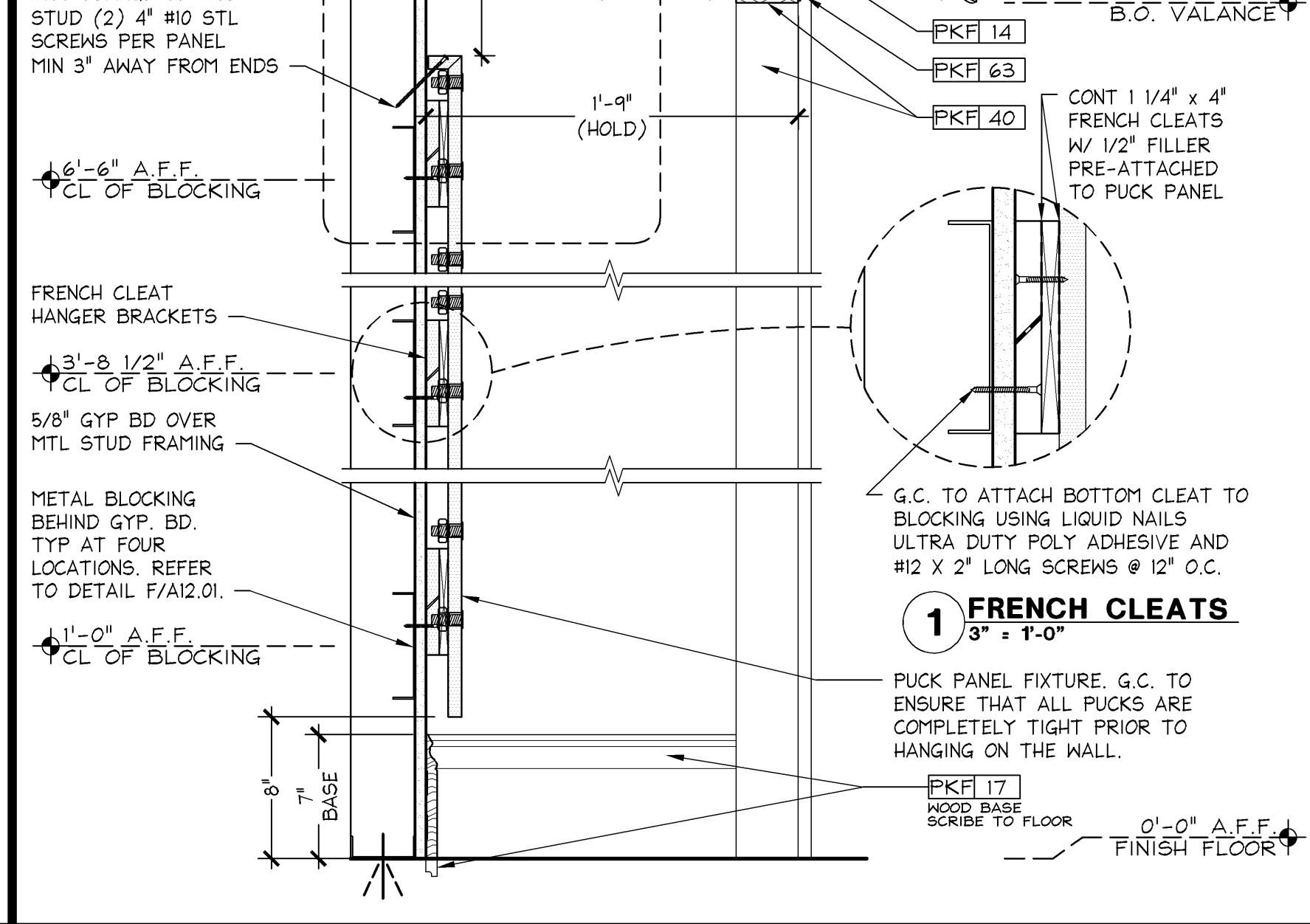
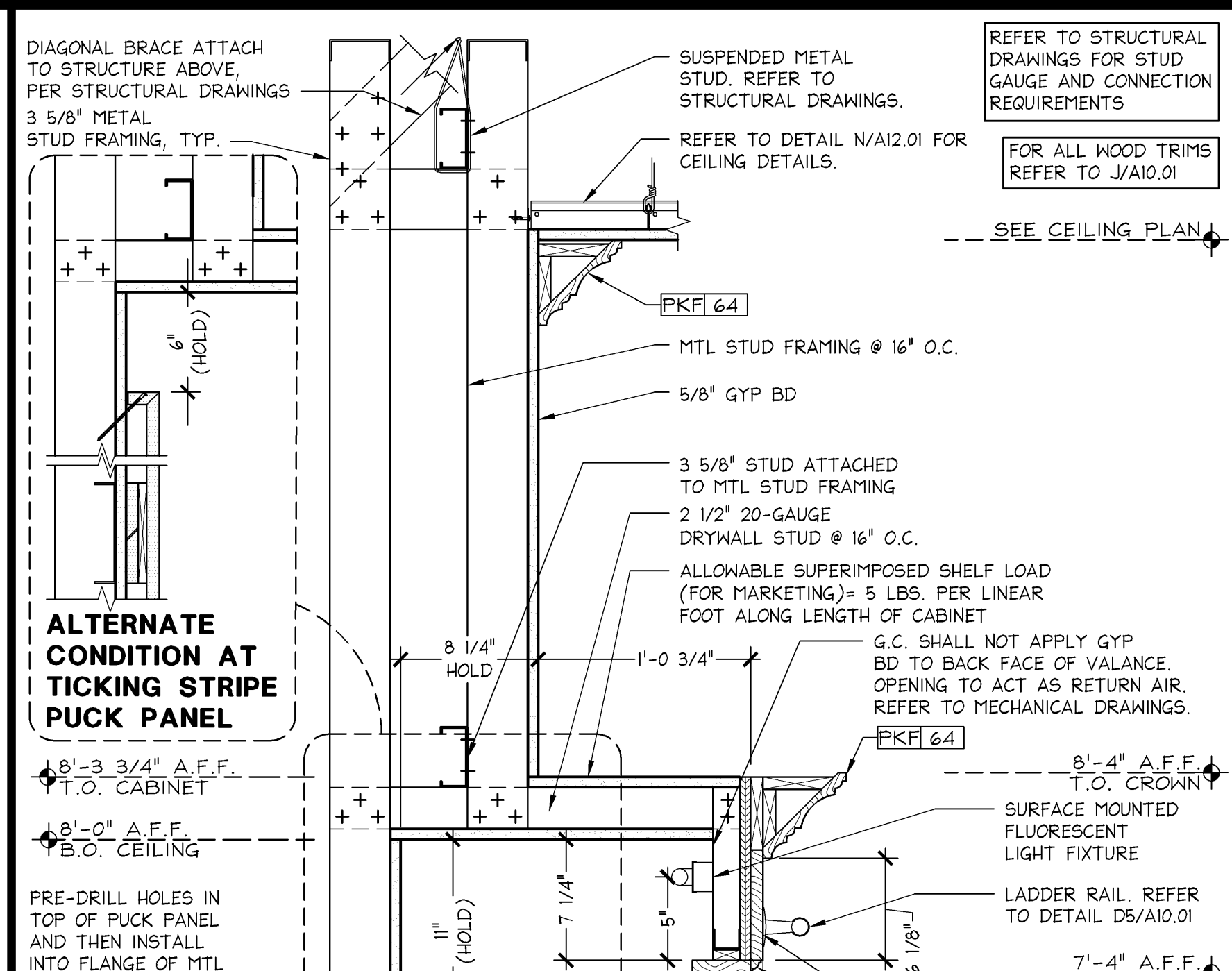


**PINK CABINET TYPE B  
SECTION**

1 1/2" ± 1'-0"

05D-A1002-G00-DET1

04.04.14

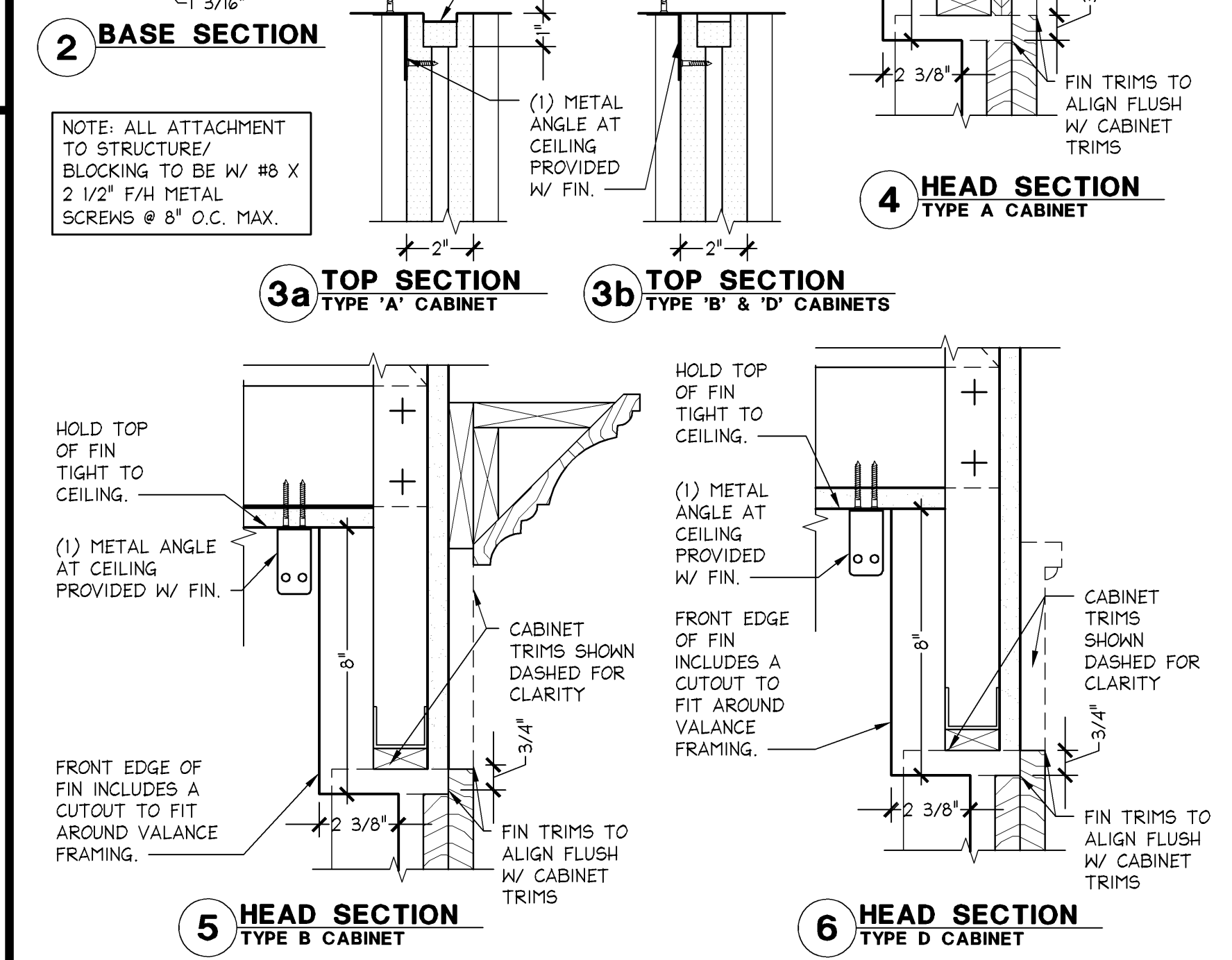
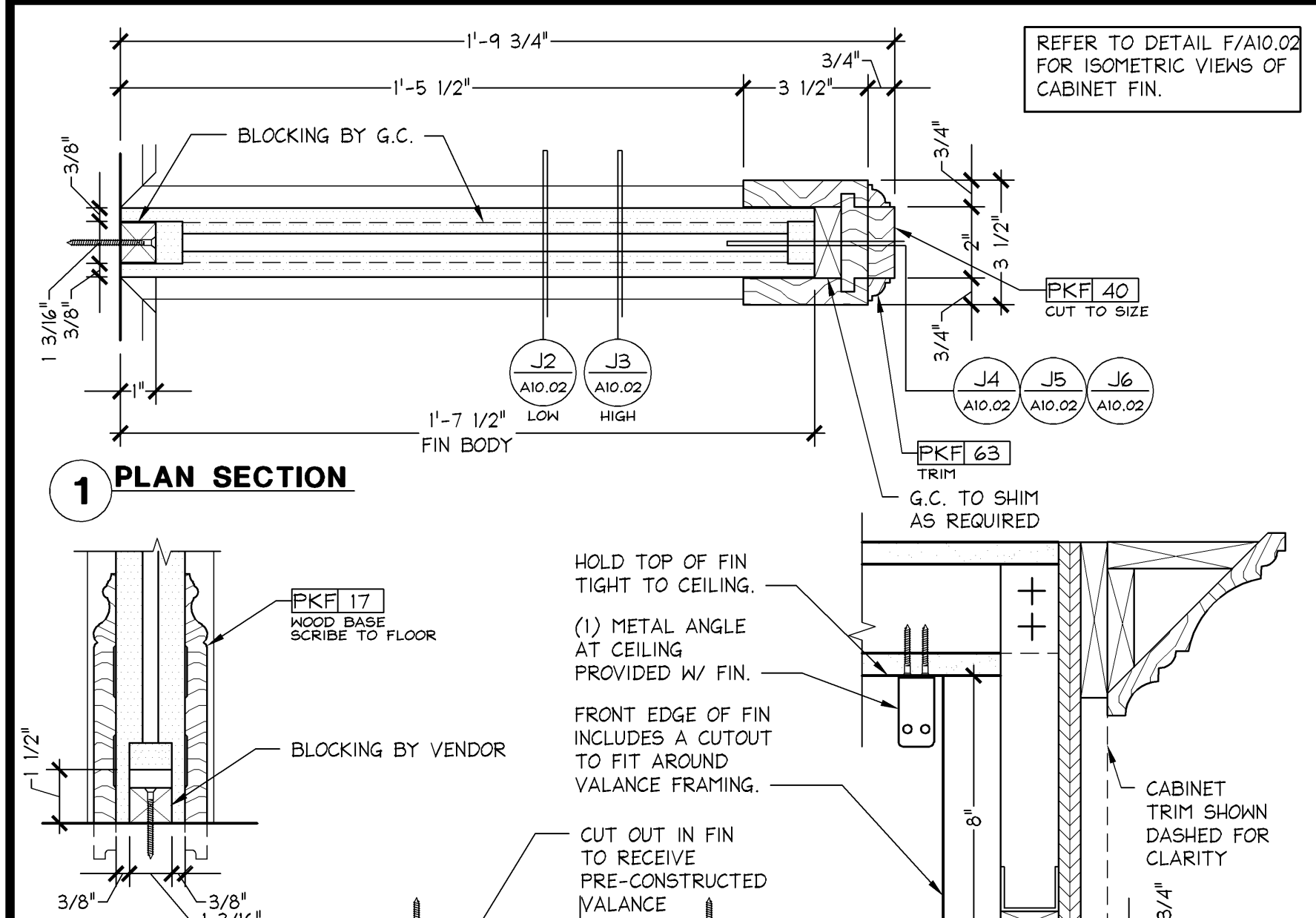


**PINK CABINET TYPE A  
SECTION**

1 1/2" ± 1'-0"

05D-A1002-C00-DET1

04.04.14

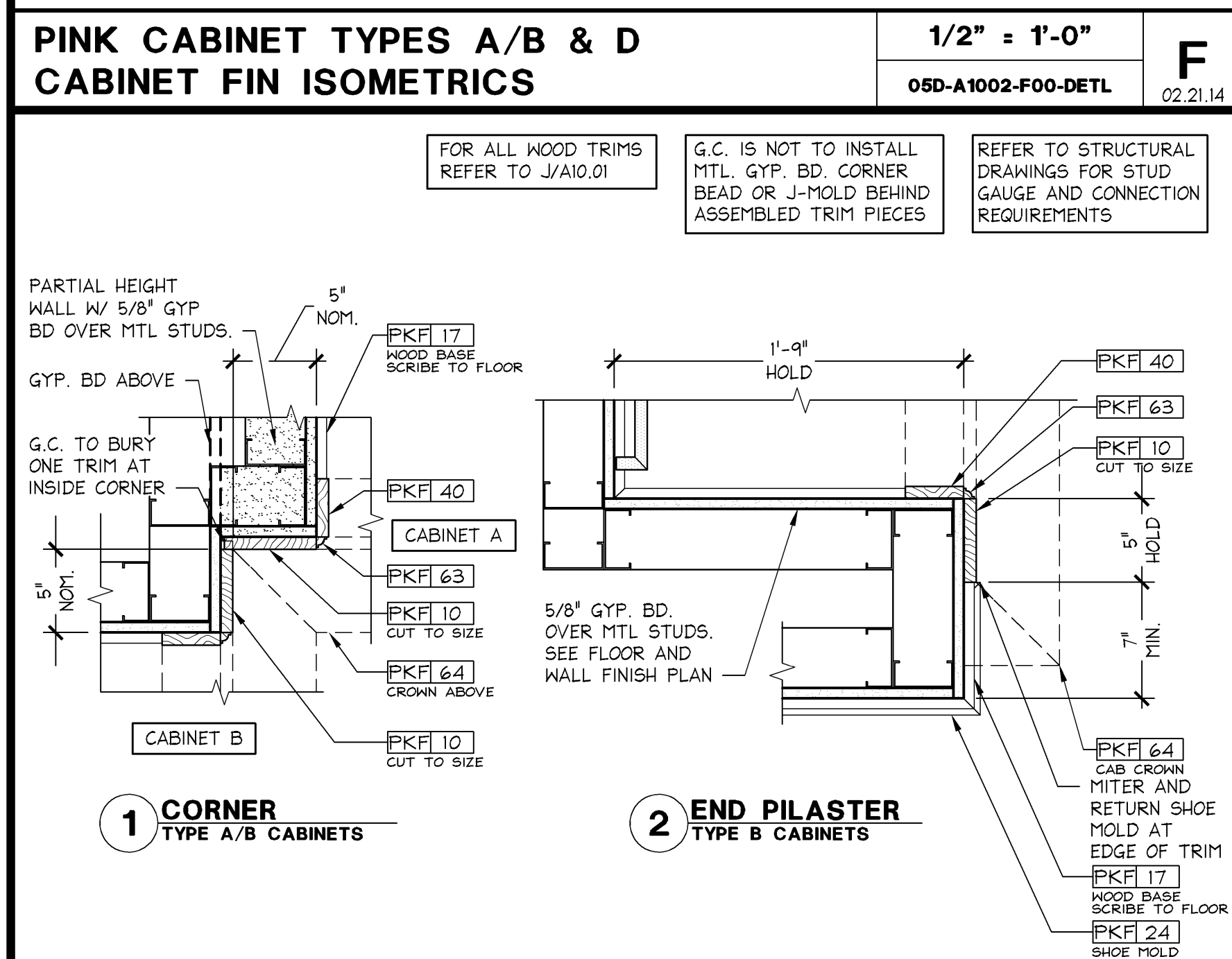
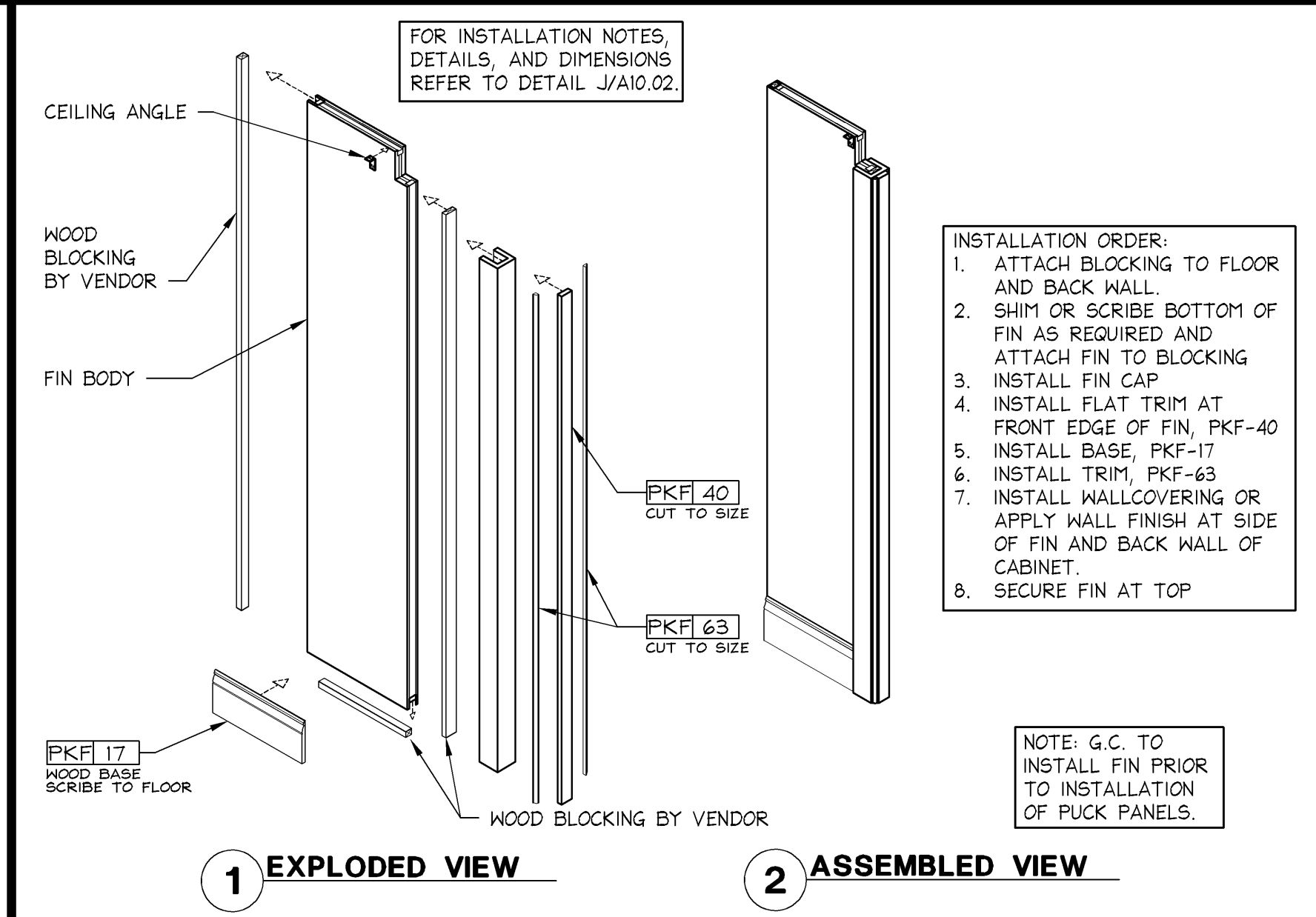


**PINK CABINET TYPES A/B & D  
FIN INSTALLATION**

3" ± 1'-0"

05D-A1002-J00-DET1

10.28.13

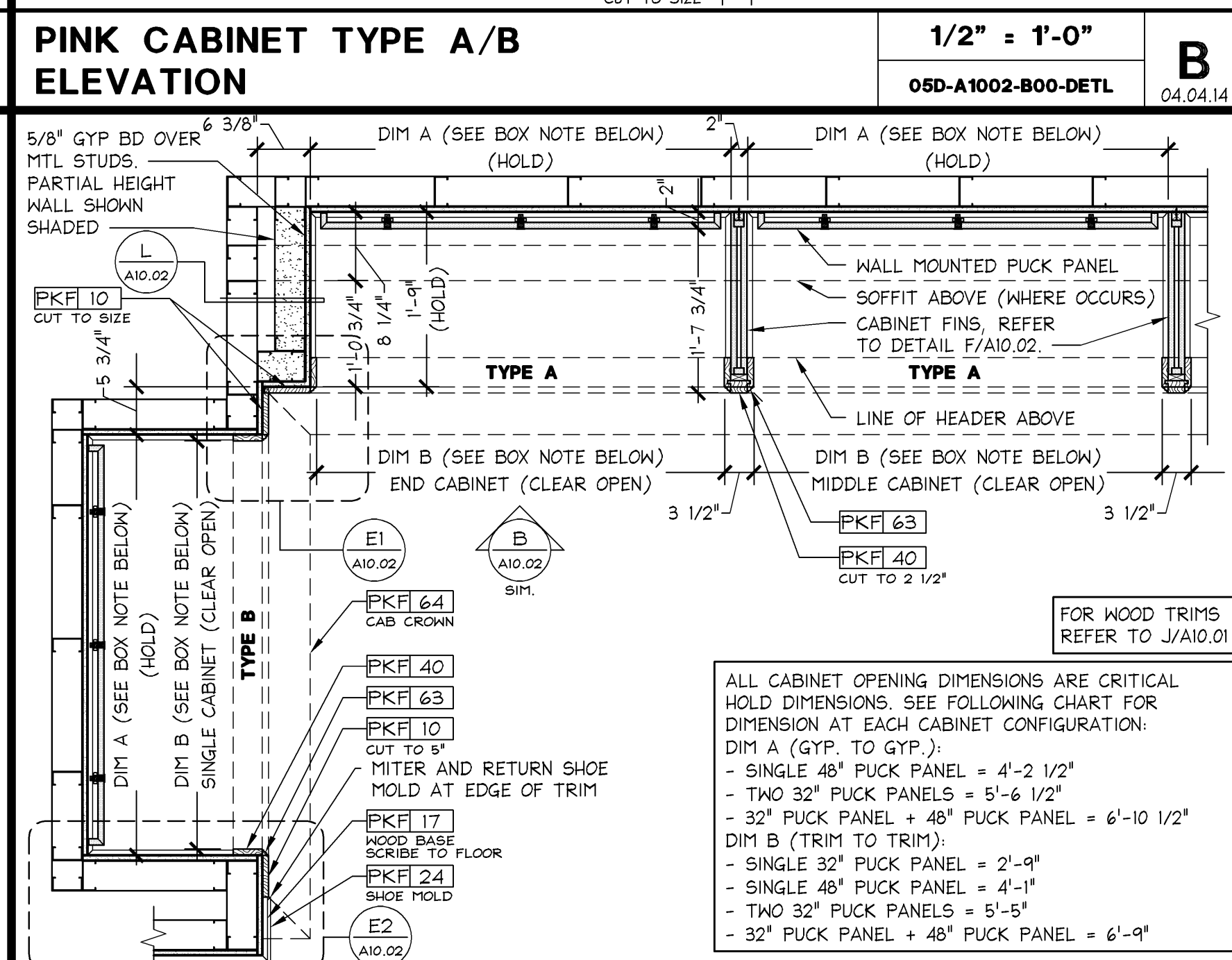
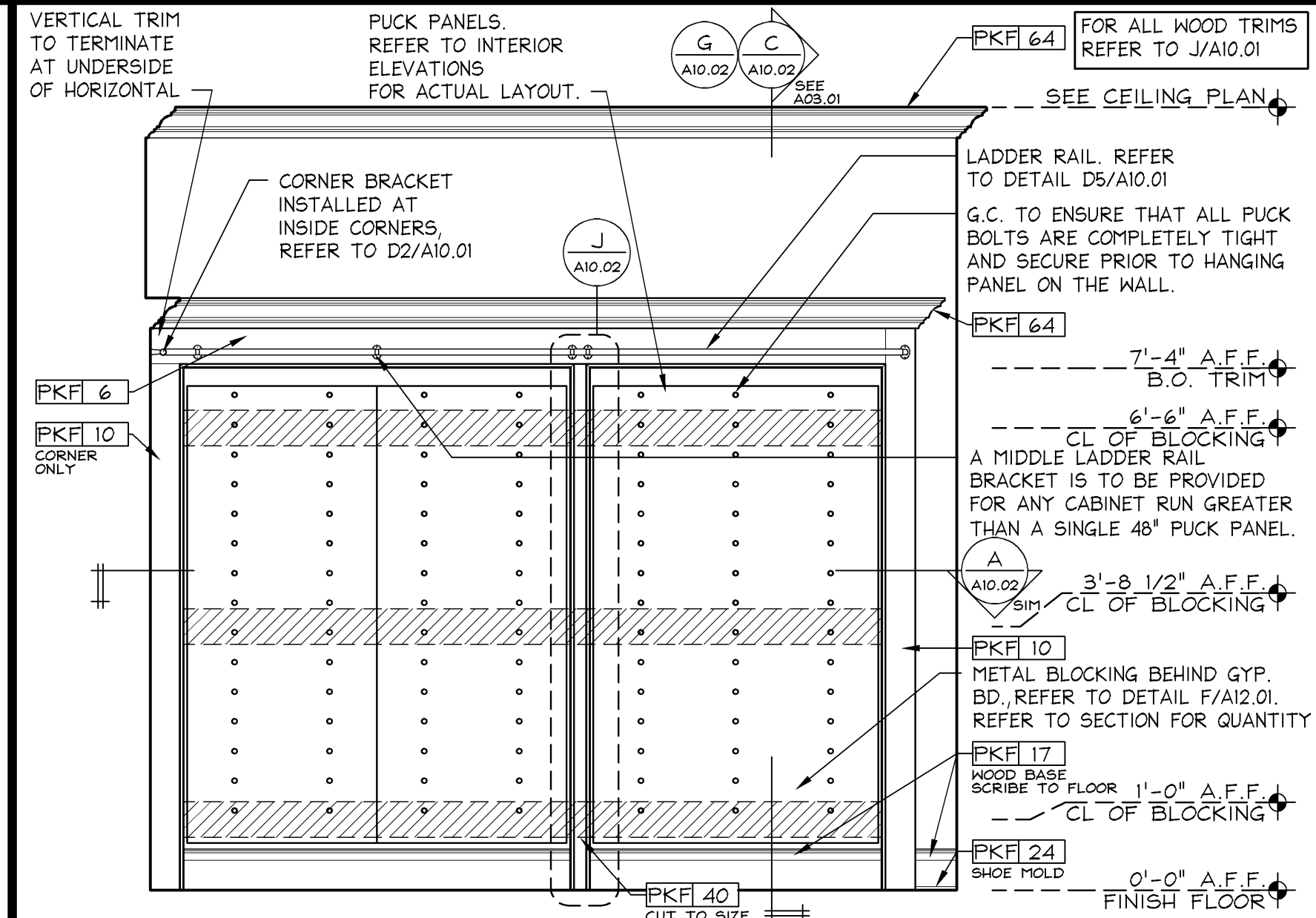


**PINK CABINET TYPE A/B  
CORNER AND PILASTER DETAILS**

1 1/2" ± 1'-0"

05D-A1002-E00-DET1

05.02.14



**PINK CABINET TYPE A/B  
PLAN SECTION**

3/4" ± 1'-0"

05D-A1002-A00-DET1

05.02.14

**GreenbergFarrow**  
1430 West Peachtree Street NW  
Suite 200  
Atlanta, GA 30309  
t. 404.601.4000 f. 404.601.3970

Limitedbrands

LIMITED STORE PLANNING, INC.  
d/b/a STORE DESIGN & CONSTRUCTION  
Three Limited Parkway • Columbus, Ohio 43230  
Telephone: 614.415.7000 • Fax: 614.415.7349

PROJECT INFORMATION:  
PINK VICTORIA'S SECRET  
FAYETTE MALL  
3401 NICHOLASVILLE RD  
SPACE # 1-904  
LEXINGTON, KY 40503  
SCOPE: TYPE: ISD&C PROJECT #:  
NEW PACKAGE: 15153A  
PINK GENERATION: 20140534  
A/E PROJECT #:  
00062007

REVISIONS:  
DATE  
DESIGNED BY: APL  
DRAWN BY: ANW  
CHECKED BY: AJD

DATE ISSUED: 09-05-2014  
DESIGNED BY: APL  
DRAWN BY: ANW  
CHECKED BY: AJD

PINK CONSTRUCTION DETAILS  
DRAWING NUMBER:  
A10.02